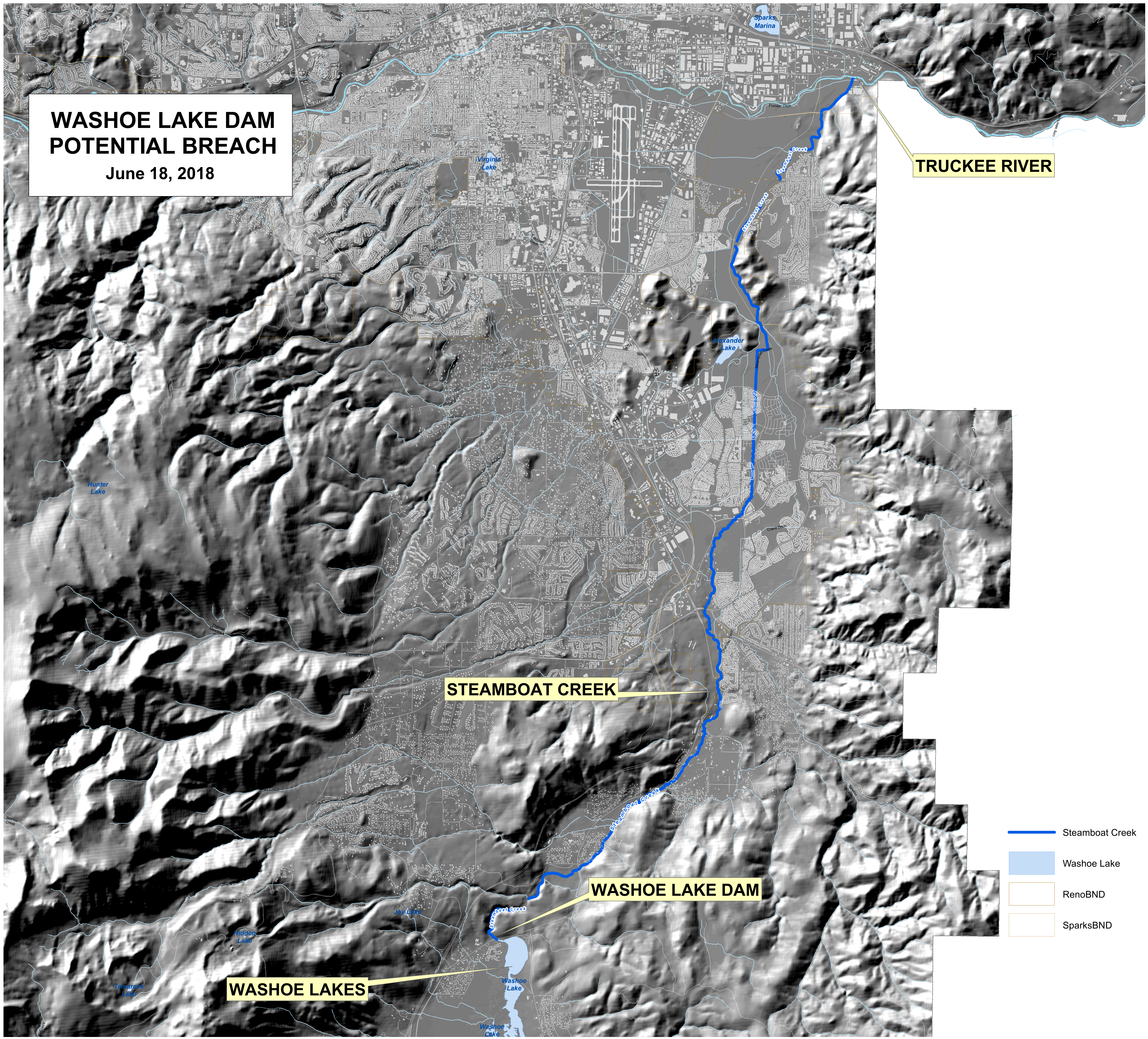


WASHOE LAKE DAM POTENTIAL BREACH

June 18, 2018



TRUCKEE RIVER

STEAMBOAT CREEK

WASHOE LAKE DAM

WASHOE LAKES

- Steamboat Creek
- Washoe Lake
- RenoBND
- SparksBND

SOURCE: WASHOE COUNTY TECHNOLOGY SERVICES/GIS

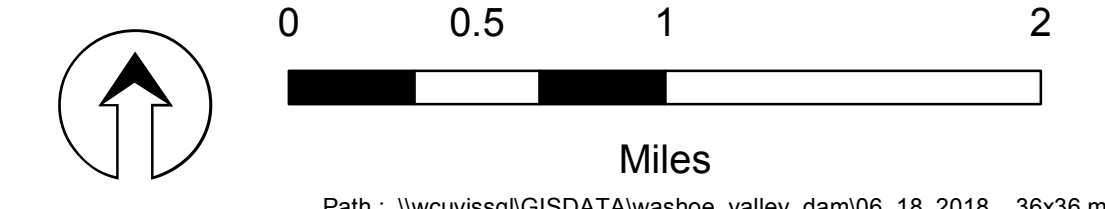
DATE & TIME : 6/18/2018 16:19

Washoe County Emergency Manager
Mr. Aaron R. Kenneston
(775) 337-5898 Voice
(775) 337-5897 Fax
AKenneston@washoecounty.us



**REGIONAL
EMERGENCY MANAGEMENT**

NOTE: THE SCALE AND CONFIGURATION OF ALL INFORMATION SHOWN HEREON ARE APPROXIMATE ONLY AND ARE NOT INTENDED AS A GUIDE FOR DESIGN OR SURVEY WORK. REPRODUCTION IS NOT PERMITTED WITHOUT PRIOR WRITTEN PERMISSION FROM THE WASHOE COUNTY TECHNOLOGY SERVICES DEPARTMENT.



Path : \\wcvissq\GISDATA\washoe_valley_dam\06_18_2018_36x36.mxd